

# USB MODULE

INSTRUCTIONS  
FOR ASAC-0/ASAC-1/ASAB

Issued on 15/06/12

R. 01

- This manual is integrant and essential to the product. Carefully read the instructions contained herein as they provide important hints for use and maintenance safety.
- This device is to be used only for the purposes it has been designed to. Other uses should be considered improper and dangerous. The manufacturer is not responsible for possible damages caused by improper, erroneous and irrational uses.
- Enertronica Santerno is responsible for the device in its original setting.
- Any changes to the structure or operating cycle of the device must be performed or authorized by the Engineering Department of Enertronica Santerno.
- Enertronica Santerno assumes no responsibility for the consequences resulting by the use of non-original spareparts.
- Enertronica Santerno reserves the right to make any technical changes to this manual and to the device without prior notice. If printing errors or similar are detected, the corrections will be included in the new releases of the manual.
- The information contained herein is the property of Enertronica Santerno and cannot be reproduced. Enertronica Santerno enforces its rights on the drawings and catalogues according to the law.

## Contents

1.	Important User Information.....	2
2.	Introduction.....	2
3.	Installation.....	2
4.	Connection.....	3
5.	Configuration .....	4
6.	Specifications .....	6



Enertronica Santerno S.p.A.  
Via della Concia, 7 - 40023 Castel Guelfo (BO) Italy  
Tel. +39 0542 489711 – Fax +39 0542 489722  
[www.santerno.com](http://www.santerno.com) - [info@santerno.com](mailto:info@santerno.com)

## 1. Important User Information

Observe all necessary safety precautions when controlling the soft starter remotely. Alert personnel that machinery may start without warning.

It is the installer's responsibility to follow all instructions in this manual and to follow correct electrical practice.

## 2. Introduction

The USB Module can be used in conjunction with WinMaster to manage Santerno soft starters.

These instructions detail the installation, set-up and configuration of the USB Module. For details on using WinMaster, refer to the WinMaster help file.



### NOTE

For WinMaster to communicate with a soft starter via the USB Module, WinMaster must be configured to use the AP ASCII or AP Binary protocols.

## 3. Installation

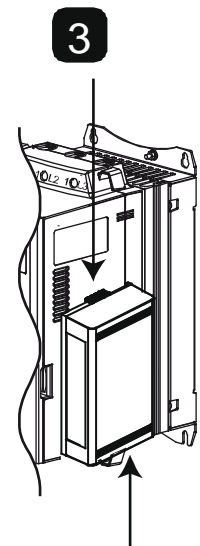
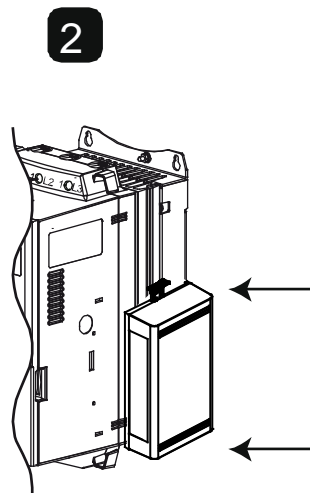
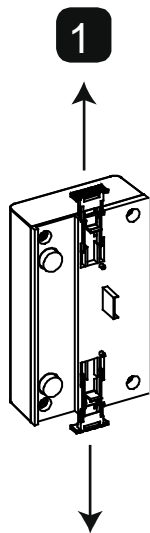


### CAUTION

Remove mains and control voltage from the soft starter before attaching or removing accessories. Failure to do so may damage the equipment.

### 3.1 Physical installation

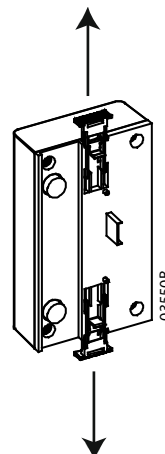
1. Fully pull out the top and bottom retaining clips on the module.
2. Line up the module with the comms port slot.
3. Push in the top and bottom retaining clips to secure the module to the starter.



10178 B

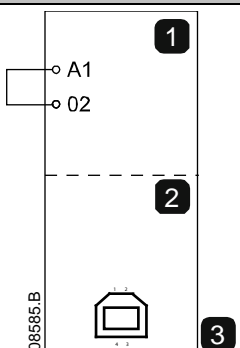
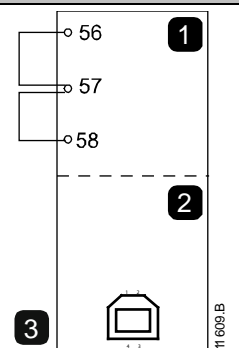
Remove the module using the following procedure:

1. Remove control power and mains supply from the soft starter.
2. Take the module off-line.
3. Disconnect the USB cable from the module.
4. Fully pull out the top and bottom retaining clips on the module.
5. Pull the module away from the soft starter.



035508

#### 4. Connection

ASAC		ASAB	
			
<b>1</b>	ASAC A1, 02: Stop input	<b>1</b>	ASAB (Remote mode) 56, 57: Stop input 58, 57: Reset input
<b>2</b>	USB Module	<b>2</b>	USB Module
<b>3</b>	USB port	<b>3</b>	USB port

ASAC: For the USB Module to accept serial commands, a link must be fitted across terminals A1-02 on the soft starter.

ASAB: Input links are required across the stop and reset inputs if the soft starter is being operated in Remote mode. In Local mode, links are not required.



#### NOTE

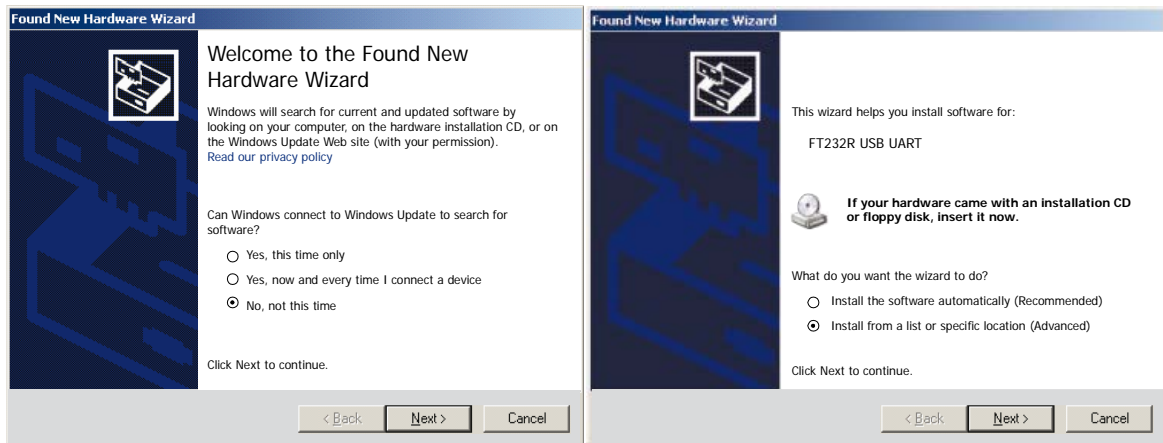
ASAB: Parameter *Comms in Remote* selects whether the soft starter will accept Start and Stop commands from the Serial Network Master while in Remote Mode. Refer to the soft starter user manual for parameter details.

## 5. Configuration

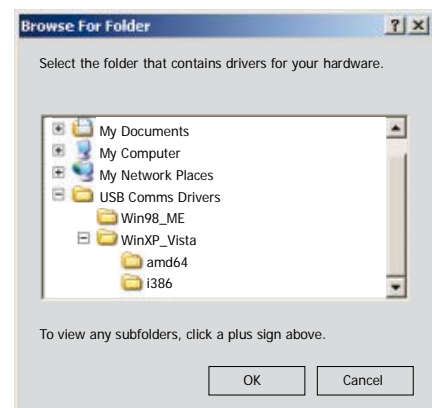
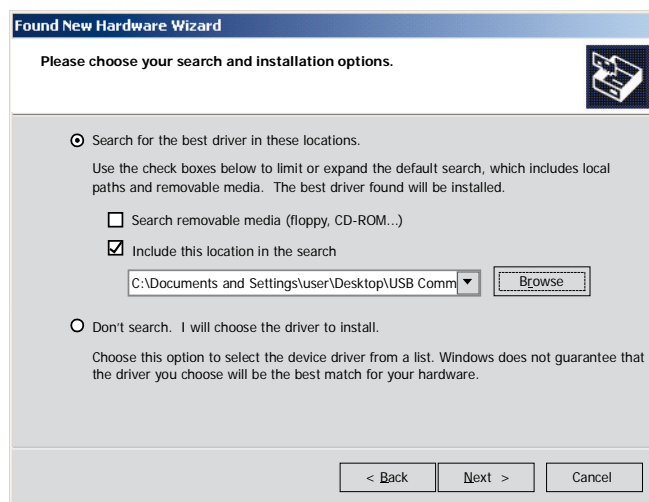
To bring the USB Module on-line:

1. Remove control power and mains supply from the soft starter.
2. Attach the module to the soft starter as illustrated.
3. Connect the module to the PC via a USB cable. The PC should detect the module and the Hardware Update Wizard will open.
4. Install the USB driver to operate the module as follows.

The driver can be downloaded from [santerno.com](http://santerno.com).



08588.A

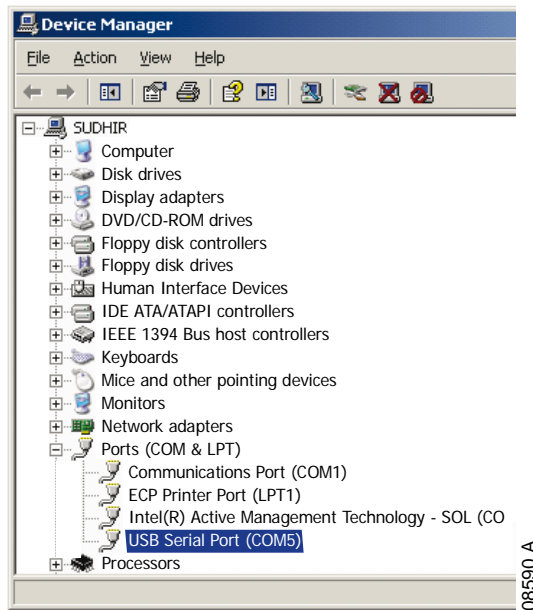


08589.A

Click on Ok, then Next. The software will install. If you see a prompt, click Continue Anyway. Once installation is complete, click Finish.

5. The PC will prompt you to install serial port driver software. Repeat the procedure in Step 4. You may need to restart your PC once the driver software is installed.

6. Identify the USB Serial Port assignment by checking Control panel > System > Hardware > Device Manager > Ports (COM & LPT).



**NOTE**

If the USB port is not shown, disconnect then reconnect the cable. If the problem persists, restart your PC.

7. Open WinMaster and change the settings as follows:  
 Protocol: ASAC Series = ASCII; ASAB = Binary  
 Baud rate: 9600  
 Address: 20  
 Port: Use the serial port number identified above
8. Apply control voltage to the soft starter and bring the Master on-line.



**NOTE**

The starter may trip on Starter Comms while the Master is off-line. Reset the soft starter and place the Master on-line.



**NOTE**

The drivers will configure the USB port that the module is connected to. You must use the same physical USB port every time you connect the module to the PC.

## 6. Specifications

### Enclosure

Dimensions .....	40 mm (W) x 166 mm (H) x 90 mm (D)
Weight .....	250 g
Protection .....	IP20

### Mounting

Spring-action plastic mounting clips (x 2)

### Connections

Soft starter .....	6-way pin assembly
Network .....	USB-B
Maximum cable length .....	3 metres (not supplied)

### Settings

Protocol .....	AP Binary or AP ASCII
Address .....	20
Data rate (bps) .....	9600