

• 15W0132B102 •

SINUS S

AC DRIVE 0.37 ... 37 kW / 0.5 ... 50 HP

Safety Module Kit

- Mounting instructions -

Issued on 26/04/2021
R.01

- This manual is integrant and essential to the product. Carefully read the instructions contained herein as they provide important hints for use and maintenance safety.
- This device is to be used only for the purposes it has been designed to. Other uses should be considered improper and dangerous. The manufacturer is not responsible for possible damages caused by improper, erroneous and irrational uses.
- Enertronica Santerno S.p.A. is responsible for the product in its original setting.
- Any changes to the structure or operating cycle of the product must be performed or authorized by Enertronica Santerno S.p.A.
- Enertronica Santerno S.p.A. assumes no responsibility for the consequences resulting by the use of non-original spare-parts.
- Enertronica Santerno S.p.A. reserves the right to make any technical changes to this manual and to the product without prior notice. If printing errors or similar are detected, the corrections will be included in the new releases of the manual.
- The information contained herein is the property of Enertronica Santerno S.p.A. and cannot be reproduced. Enertronica Santerno S.p.A. enforces its rights on the drawings and catalogues according to the law.



13610716



Enertronica Santerno S.p.A.
Via della Concia, 7 – 40023 Castel Guelfo (BO) Italy
Tel. +39 0542 489711 – Fax +39 0542 489722
santerno.com info@santerno.com

1 General Information

1.1 First read, then start



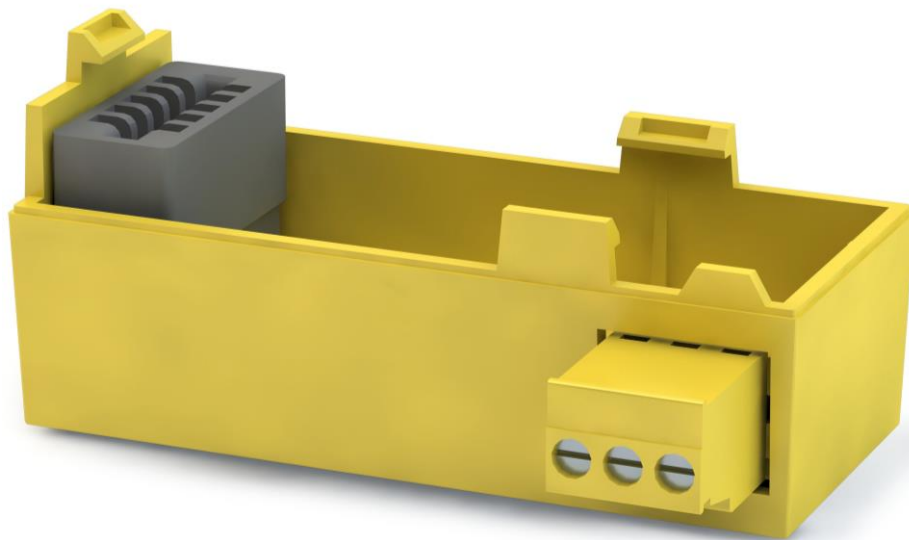
Read this documentation thoroughly before carrying out the installation and commissioning. Please observe the safety instructions!



You will find information on wiring and commissioning in the mounting and switch-on instructions of the inverter.



Information and tools with regard to the Santerno products can be found on the Internet: santerno.com



2 Mounting

2.1 Important Notes



DANGER!

Dangerous electrical voltage

Possible consequence: death or severe injuries

- ▶ All works on the inverter must only be carried out in the deenergized state.
- ▶ After switching off the mains voltage, wait for at least 3 minutes before you start working.

NOTICE!

When the blanking cover is removed, parts may fall into the inverter.

Possible consequence: Failures.

- ▶ Mount the safety module as shown. This ensures that no parts will fall into the inverter.



After being mounted, the safety module cannot be removed anymore!

2.2 Mounting steps up to SINUS S 0007 4T (4 kW HD)

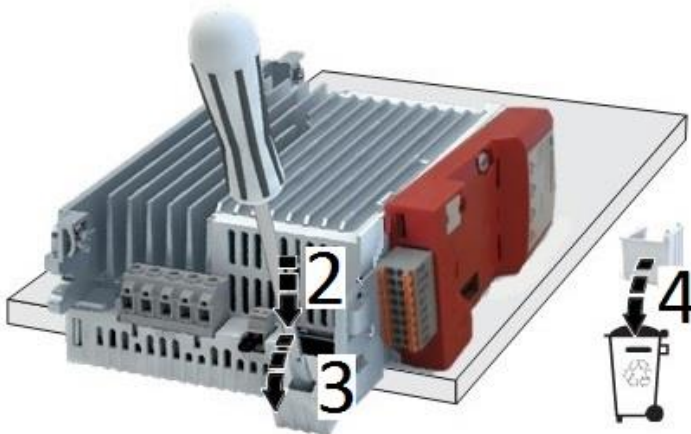
You need:

Slotted screwdriver size 3

1. Put the inverter on the edge of a worktop.



2. Insert the screwdriver into the cut-out.
3. Break out the blanking cover with a downward rotation.
4. Dispose of the blanking cover.



5. Insert the safety module into the plug connection.



6. Press until the safety module snaps into the holders.



The safety module is now mounted.

2.3 Mounting steps SINUS S 0011 4T (5.5 kW HD) and above

You need:

- Slotted screwdriver size 3
1. Insert the screwdriver into the cut-out.
 2. Break out the blanking cover with a rotation to the left.
 3. Dispose of the blanking cover.



4. Insert the safety module into the plug connection.
5. Press until the safety module snaps into the holders.



The safety module is now mounted.