

• 15W0132B101 •

SINUS S

AC DRIVE 0.37 ... 37 kW / 0.5 ... 50 HP

Door Mounting Kit - Mounting instructions -

Issued on 31/03/2021

R.01

- This manual is integrant and essential to the product. Carefully read the instructions contained herein as they provide important hints for use and maintenance safety.
- This device is to be used only for the purposes it has been designed to. Other uses should be considered improper and dangerous. The manufacturer is not responsible for possible damages caused by improper, erroneous and irrational uses.
- Enertronica Santerno S.p.A. is responsible for the product in its original setting.
- Any changes to the structure or operating cycle of the product must be performed or authorized by Enertronica Santerno S.p.A.
- Enertronica Santerno S.p.A. assumes no responsibility for the consequences resulting by the use of non-original spare-parts.
- Enertronica Santerno S.p.A. reserves the right to make any technical changes to this manual and to the product without prior notice. If printing errors or similar are detected, the corrections will be included in the new releases of the manual.
- The information contained herein is the property of Enertronica Santerno S.p.A. and cannot be reproduced. Enertronica Santerno S.p.A. enforces its rights on the drawings and catalogues according to the law.



13598244



Enertronica Santerno S.p.A.

Via della Concia, 7 – 40023 Castel Guelfo (BO) Italy

Tel. +39 0542 489711 – Fax +39 0542 489722

santerno.com info@santerno.com

About this document

WARNING!

Read this documentation carefully before starting any work.

► Please observe the safety instructions!

Document description

Further documents



You will find information on wiring and commissioning in the mounting and switch-on instructions of the inverter.



Information and tools with regard to the Santerno products can be found on the Internet:
santerno.com

Product information

Product description

The ZZ0132054 door mounting kit is a mounting set.

- The mounting set enables the ZZ0132023 keypad to be mounted into a user interface, e.g. control panel or control cabinet door.
- The ZZ0132023 keypad is not included in the scope of supply.

The ZZ0132054 door mounting kit may only be used together with:

- ZZ0132023 keypad

for

- Sinus S inverters



These accessories can be used under the operating conditions of the assigned products. Differing or additional operating conditions are described here.

Enclosure

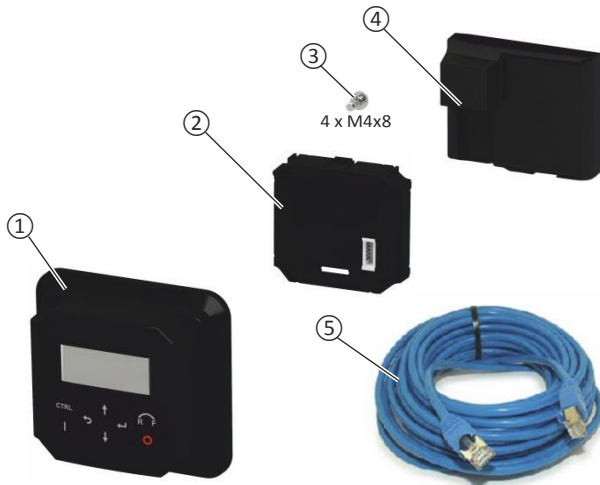
Mounting surface requirements:

- plane
- smooth
- stable
- clean

Achievable degree of protection

- CE: IP65
- UL: Type 4 (in Preparation)

Door Mounting Kit - scope of supply

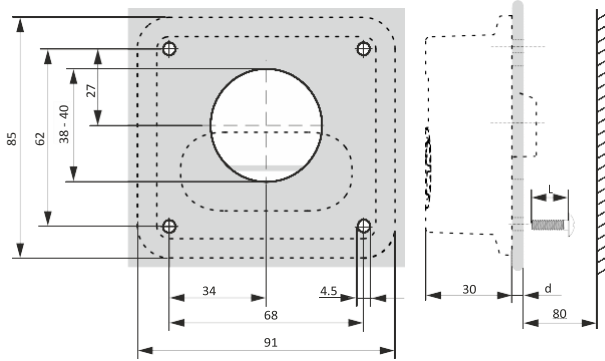


- | | | | |
|---|----------------------------------|---|----------------------|
| ① | Protective cover | ⑤ | 3 m Connecting cable |
| ② | External adapter | | |
| ③ | Fixing material (4 x M4*8 screw) | | |
| ④ | Inverter adapter | | |

Mechanical installation

Preparation

Prepare a mounting cutout

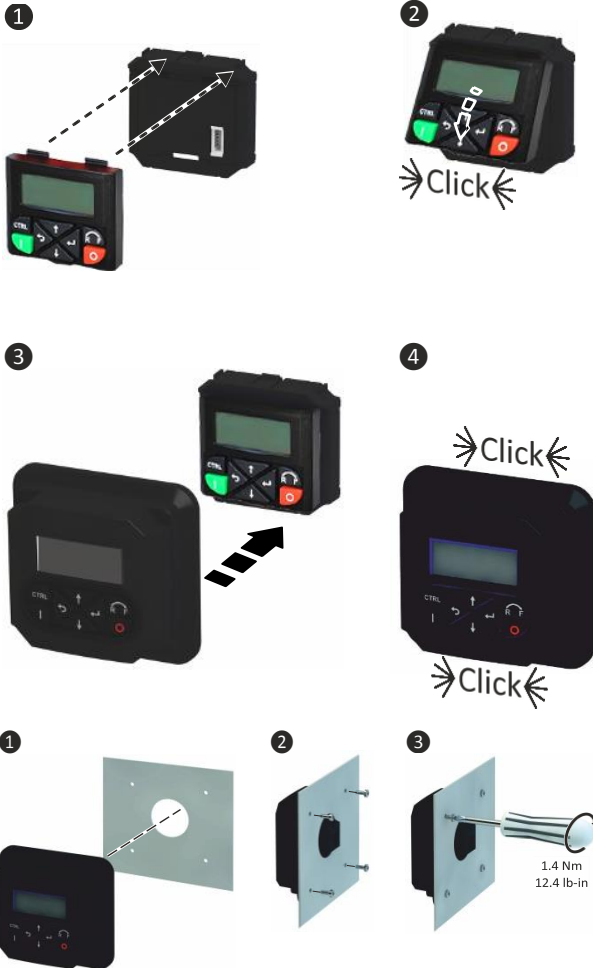


The M4*8 mm screws are suitable for a material thickness of $d = 2 \dots 4$ mm.

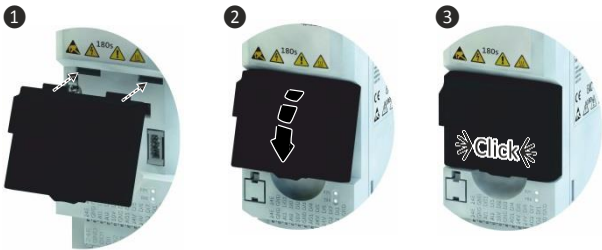
In the event of deviating installation conditions, the screws must be replaced in a suitable way. The effective thread length must be $4 \dots 6$ mm.

Mounting

Mounting steps on the front side



Mounting steps on the device side



Install the connecting cable



Secure the connecting cable close to the mounting position against mechanical impact by means of appropriate measure