

SANTERNO.IO

QUICK GUIDE

Agg. 20/04/2018

R.01

E n g l i s h

- This manual is integrant and essential to the product. Carefully read the instructions contained herein as they provide important hints.
- Enertronica Santerno S.p.A. is responsible for the device in its original setting.
- Enertronica Santerno S.p.A. reserves the right to make any technical changes to this manual and to the device without prior notice. If printing errors or similar are detected, the corrections will be included in the new releases of the manual.
- Enertronica Santerno S.p.A. is responsible for the information contained in the original version of the Italian manual.
- The information contained herein is the property of Enertronica Santerno S.p.A. and cannot be reproduced.
- Enertronica Santerno S.p.A. enforces its rights on the drawings and catalogues according to the law.



Enertronica Santerno S.p.A.
Via della Concia, 7 - 40023 Castel Guelfo (BO)
Tel. +39 0542 489711 - Fax +39 0542 489722
santerno.com info@santerno.com

INDEX

1. INTRODUCTION3

1.1. SANTERNO.IO 3

2. WEB PORTAL4

2.1. LOGIN..... 4

2.2. PLANTS 5

2.3. MAP 6

2.4. PLANT MENU` 7

2.4.1. SUMMARY..... 7

2.4.2. SCHEME..... 8

2.4.3. DASHBOARD 9

2.4.4. SERVICES 10

1. INTRODUCTION

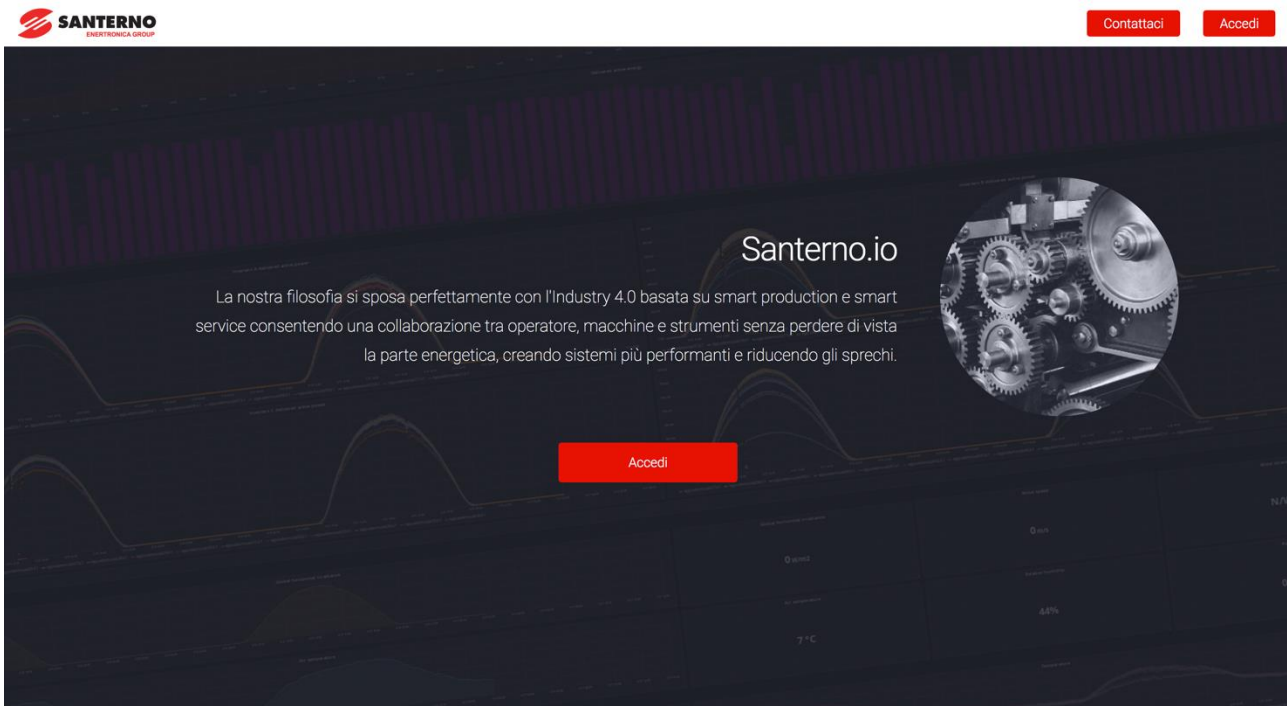
1.1. Santerno.io

Santerno.io is an IoTplatform that allows to monitor in real time all the data in the plant.

The monitoring is continuous and granular, with a system of personalized alarms and dedicated dashboard.

The portal makes use of the concepts of Industry 4.0, for instance smart production and smart services, and thus creating system more performing. Santerno,.io is designed to monitoring and control all types of plants: industrial, fotovoltaic, HVAC, water management and electric recharger. A system diagram constantly photographs the situation of the components, each variation corresponds to a color and a code that describes the situation in real time.

Log in <https://santerno.io/> and enter with your own and secure username and password.



2. WEB PORTAL

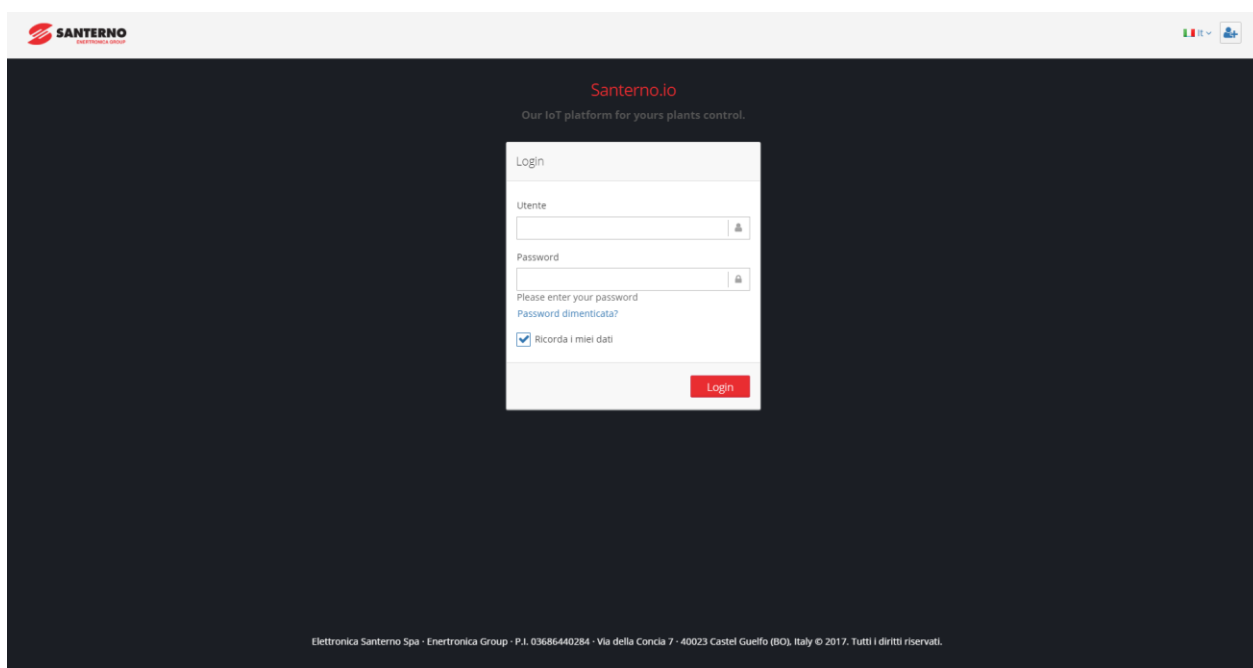
The web interface is fast, user friendly and secure.

The service receives data from the data loggers installed in the plant, aggregates and processes them to provide an unified view, provides dashboards that allow the monitoring of the plant to verify its correct operation and evaluate the production in real time.

2.1. Login

Select “Access” on <https://portal.santerno.io/login/>. on the top right corner.

Enter with your personal username and password.



The screenshot shows the Santerno.io login interface. At the top left is the Santerno logo. At the top right are flags for language selection and a user icon. The main heading is "Santerno.io" with the tagline "Our IoT platform for yours plants control." Below this is a "Login" form with fields for "Utente" (username) and "Password". There is a "Please enter your password" message and a link for "Password dimenticata?". A checkbox labeled "Ricorda i miei dati" is checked. A red "Login" button is at the bottom right of the form. At the bottom of the page, there is a footer with contact information and copyright notice.

Santerno.io
Our IoT platform for yours plants control.

Login

Utente

Password

Please enter your password
[Password dimenticata?](#)

☒ Ricorda i miei dati

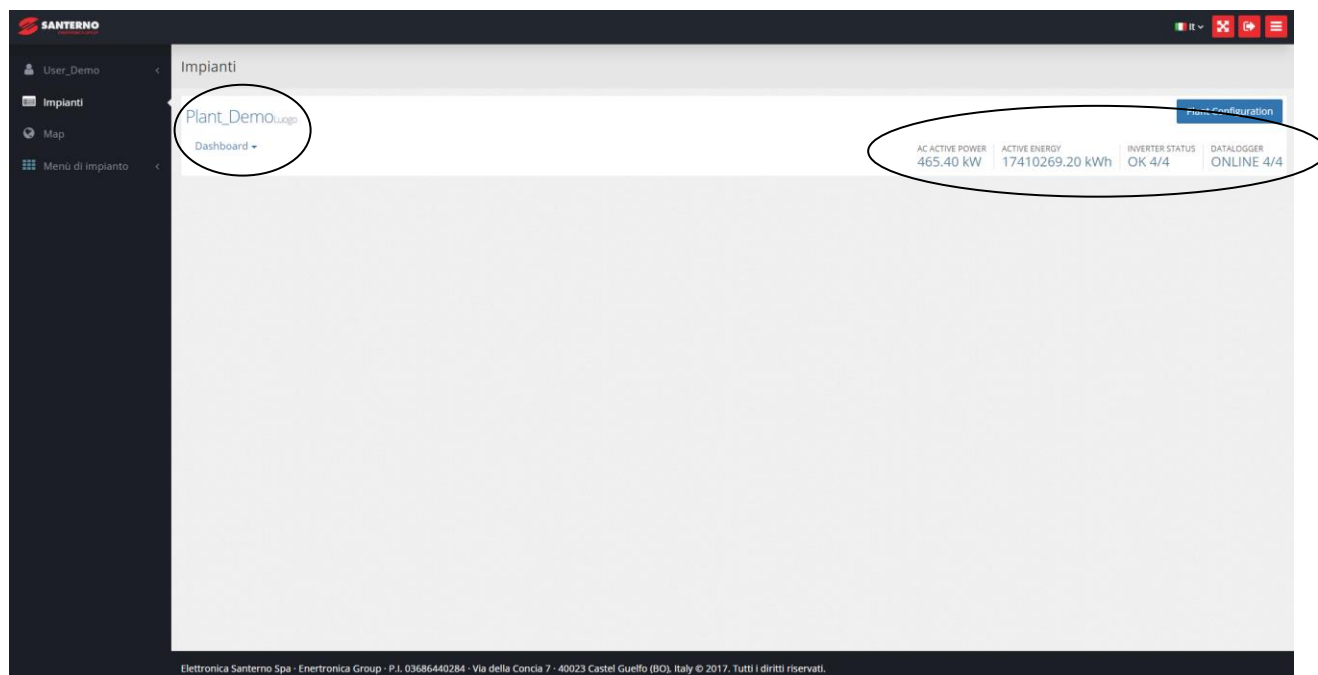
Login

Elettronica Santerno Spa - Enertronica Group - P.I. 03686440284 - Via della Concia 7 - 40023 Castel Guelfo (BO), Italy © 2017. Tutti i diritti riservati.

2.2. Plants

In this page all the plants available for the logged user are listed.

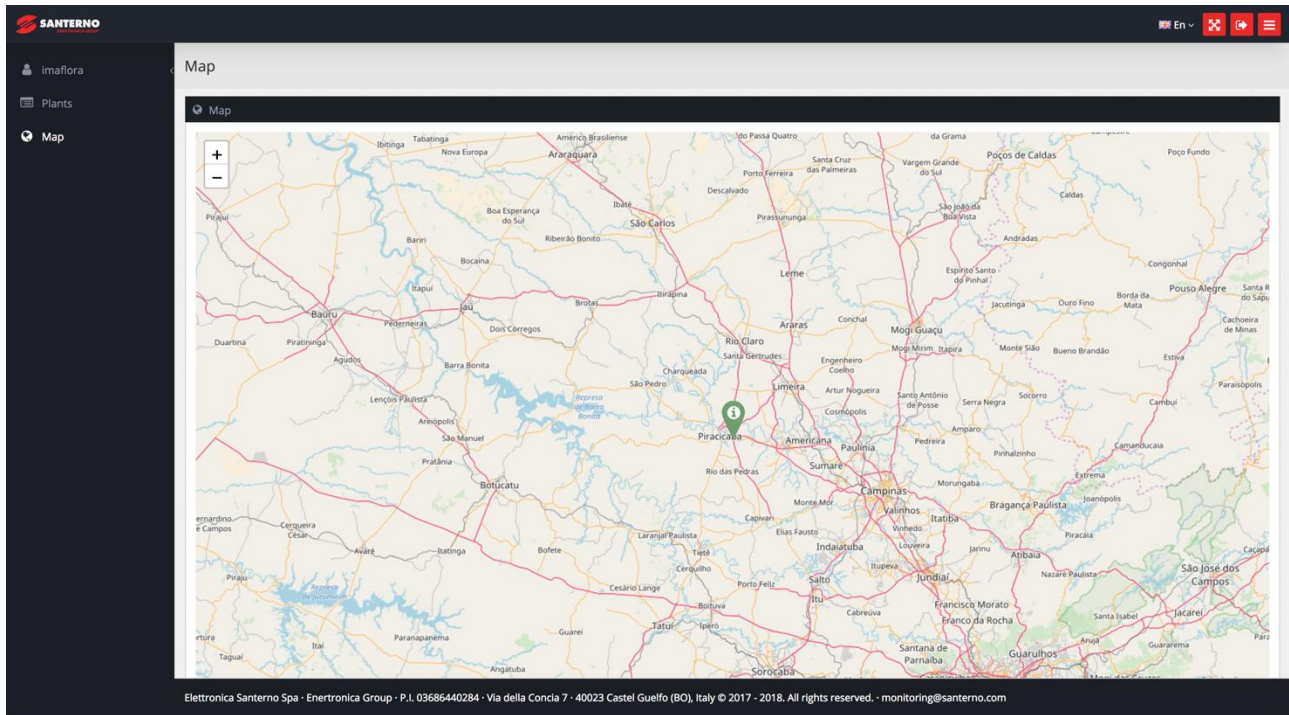
Highlights, like active power, active energy, the status of the inverters and data loggers, are reported in the right side.



To see all the plant's data, just click on the name of the plant (ex: Plant_Demo)

2.3. Map

For each plant it is possible to see where it is located on a map.



The plant on the map is marked with a convention color that indicates the operating status. By clicking on the icon, a summary of the main plant's metrics is shown.

Plant_Demo	
Status	Inverters OK: 1/1
Rated power	100 kW
Delivered active power	78.30 kW
Delivered active energy	963001.52 kWh
Commissioning	2011-12-29
Go to plant	

The plant's summary allows the visualization of the production data of the selected plant, detailing the individual subfields, with information of the inverters, string boxes or sensors.

2.4. Plant Menù

The menu is subdivided into submenus:

- Summary
- Scheme
- Dashboard
- Services

2.4.1. Summary

Datalogger ID	AC ACTIVE POWER	ACTIVE ENERGY	INVERTER STATUS	DATALOGGER
DL1 90513F000000	323.90 kW	11518196.80 kWh	OK 4/4	ONLINE 4/4
DL2 90513F000008	101.30 kW	3368473.60 kWh	OK 1/1	ONLINE
DL3 90513F000000	99.60 kW	3632721.92 kWh	OK 1/1	ONLINE
DL4 90513F100000	103.10 kW	3564162.56 kWh	OK 1/1	ONLINE
	19.90 kW	952838.72 kWh	OK 1/1	ONLINE

Elettronica Santerno Spa - Enertronica Group - P.I. 03686440284 - Via della Concia 7 - 40023 Castel Guelfo (BO), Italy © 2017 - 2018. Tutti i diritti riservati. - monitoring@santerno.com

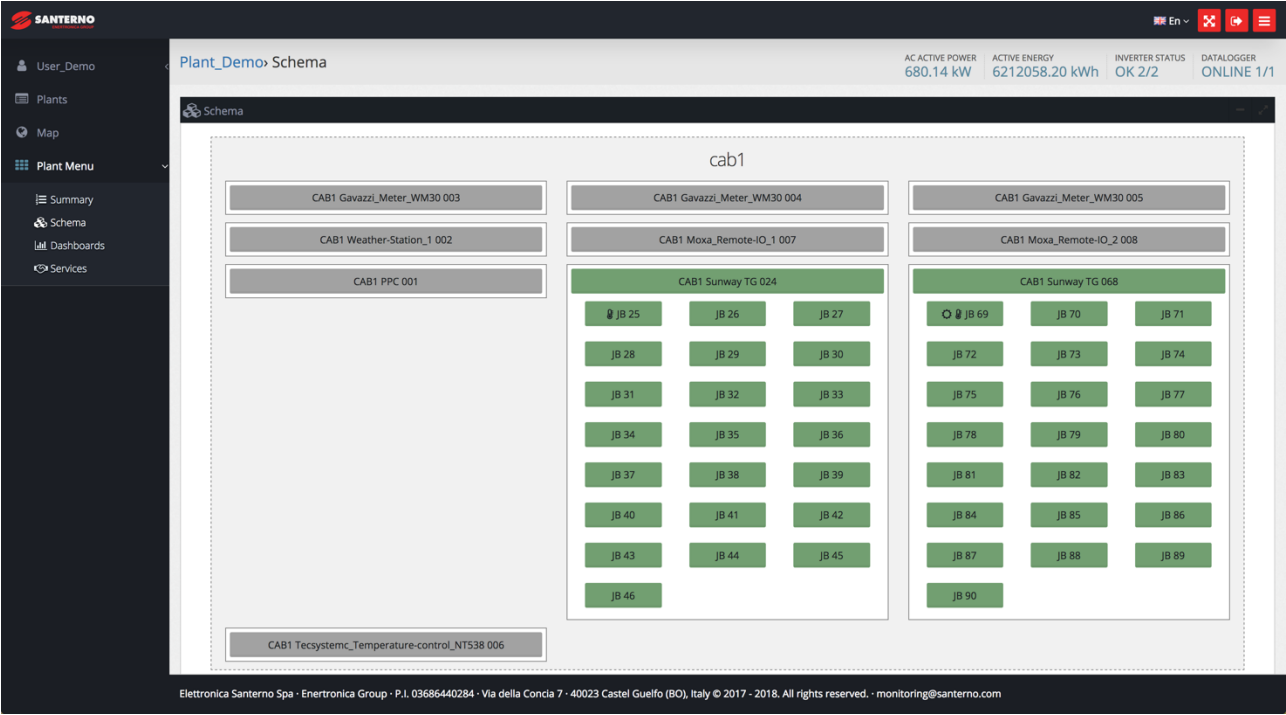
Summary shows the list of active dataloggers, and by clicking on them all the acquired devices and their measurements are shown.

Datalogger ID	AC ACTIVE POWER	DC ACTIVE POWER	CPU TEMPERATURE	INVERTER STATUS	FIELD VOLTAGE	ACTIVE ENERGY	HEATSINK TEMPERATURE
DL2 Sunway TG 046 [ST170X#46]	251.6 kW	252.6 kW	46.57 °C	RUN	514.0 V	3623973.44 kWh	72.02 °C
DL2 String Box 047 [QP105X#47]	5.98 A						
DL2 String Box 048 [QP105X#48]	5.8 A						
DL2 String Box 049 [QP105X#49]	5.94 A						

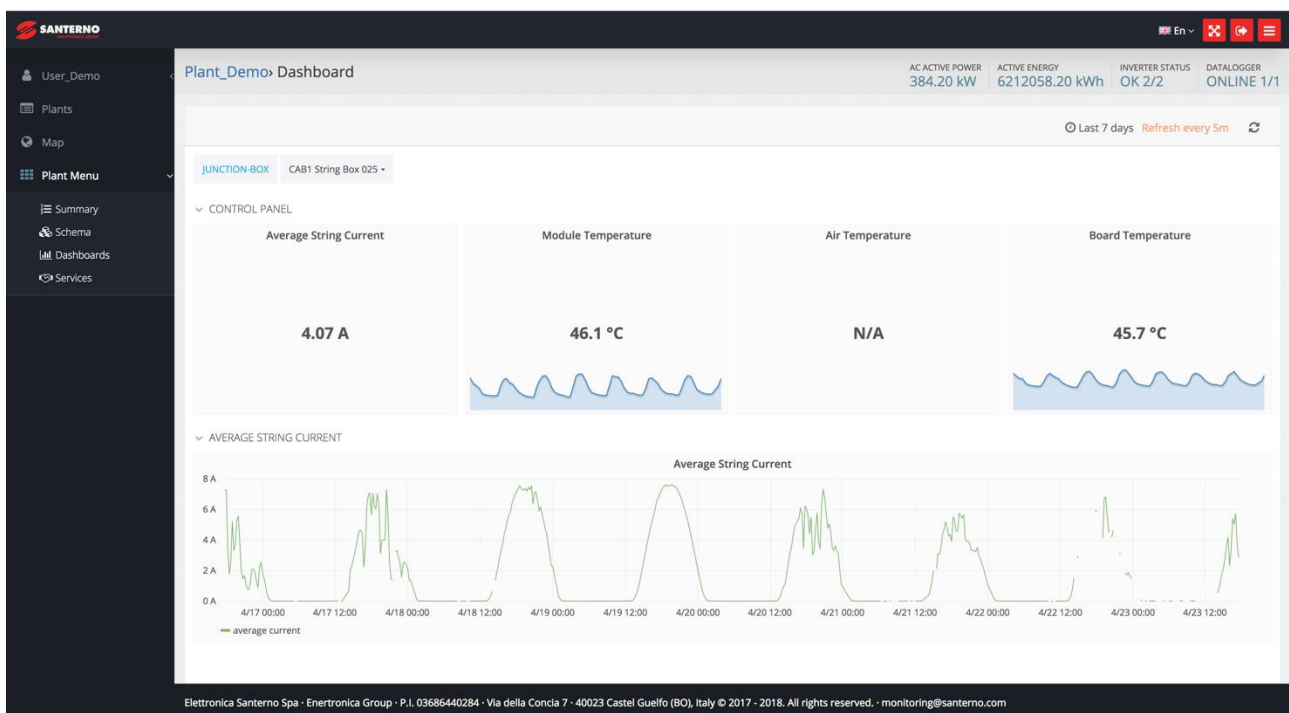
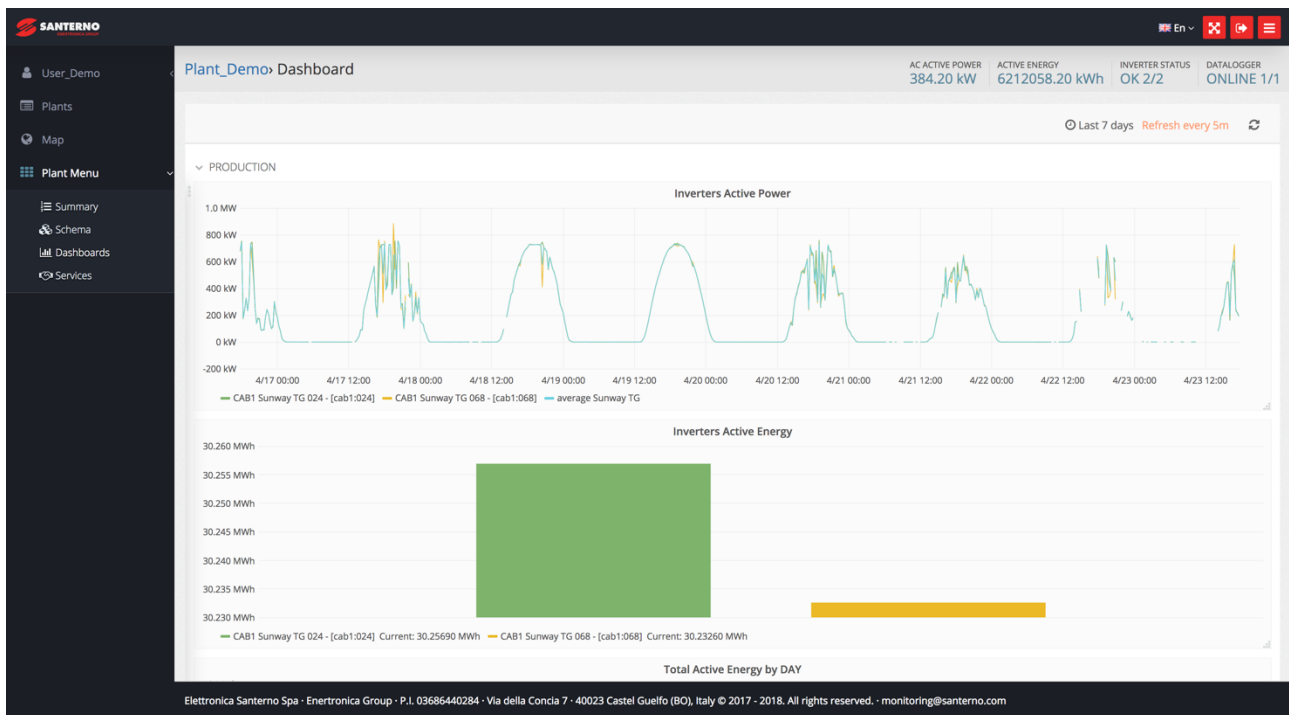
Elettronica Santerno Spa - Enertronica Group - P.I. 03686440284 - Via della Concia 7 - 40023 Castel Guelfo (BO), Italy © 2017. Tutti i diritti riservati.

2.4.2. Scheme

The diagram shows the inverters and the monitored devices.



2.4.3. Dashboard







The graphs show the production trend including power, energy and relative irradiation, with separate data for each device and sensor. It's possible to select or deselect some curves to analysis and compare only some curves.

It's also possible to zoom part of the chart by just selecting and dragging.

The chart interval could be modified by changing the time range.

Last 7 days Refresh every 5m

Time range
 From: 
 To: 
 Refreshing every:  

Quick ranges

Last 2 days
Last 7 days
 Last 30 days
 Last 90 days
 Last 6 months
 Last 1 year
 Last 2 years
 Last 5 years


Yesterday
 Day before yesterday
 This day last week
 Previous week
 Previous month
 Previous year

Today
 Today so far
 This week
 This week so far
 This month
 This month so far
 This year
 This year so far

Last 5 minutes
 Last 15 minutes
 Last 30 minutes
 Last 1 hour
 Last 3 hours
 Last 6 hours
 Last 12 hours
 Last 24 hours

2.4.4. Services

In the submenu Services it's possible to view all the active services, and it may be possible to see the price of next renewal of the monitoring service.



User_Demo
 Plants
 Map
 Plant Menu

Plant_Demo Services

Services

Show 10 entries

Code	Name	Start	End	Price	Status
SW000E040	Live	May 1, 2018	May 1, 2018	-	Active
SW000E041	Historical	May 1, 2018	May 1, 2018	-	Active

Showing 1 to 2 of 2 entries

Previous 1 Next

Elettronica Santerno Spa - Enertronica Group - P.I. 03686440284 - Via della Concia 7 - 40023 Castel Guelfo (BO), Italy © 2017 - 2018. All rights reserved. - monitoring@santerno.com

Starting from thirty days before the service expiry, the following banner is shown automatically in every page.

Plant subscription will expire on 01-05-2018
 Please contact monitoring@santerno.com